



Application Delivery Platform New Generation Server Load Balancer

32-bit



AX Series Performance by Design



- ▶ **Twice the Performance at Half the Price**
- ▶ **Revolutionary New Architecture**
- ▶ **Innovative, Advanced Features**
- ▶ **All Features Included**

The AX Series Advanced Traffic Manager family from A10 Networks is designed to meet the growing demands of Web sites, carriers and enterprises. The AX offers intelligent Layer 4-7 application processing capabilities with industry-leading performance and scalability to meet critical business requirements at competitive prices.

The AX Series' unique Advanced Core Operating System (ACOS) offers true scalable performance. With rich Layer 7 features and its aFlex scripting language, the AX Series integrates into any data center to enable advanced Web application delivery solutions. The AX also includes the most comprehensive set of IPv6 and Network Address Translation (NAT) features of any server load balancer on the market today.

AX's advanced server load balancing and flexible health monitoring capabilities ensure application availability and reliability. With the AX Series' standard redundant components and high availability design, organizations ensure non-stop service availability for all types of applications. With the AX Series' line rate security defenses and secure email features, organizations can now deploy data center wide protection against network-level attacks to ensure business continuity for critical services.



Key Benefits

Industry-leading Application Price/Performance

- Superior performance by any measure – Layer 4 connections per second (CPS), Layer 7 CPS, SSL transactions per second, RAM Cache and Layer 4-7 throughput.
- Industry's best performance per watt, per dollar, and per rack unit.
- Advanced Core Operating System (ACOS) delivers multi-threaded performance and is tuned for multiple CPUs with multiple cores for future-proof scalability.
- Purpose-built hardware provides efficient packet buffer management,

TCP connection multiplexing, SSL acceleration, support for IPv4 and IPv6 and much more.

- 10/100/1000 Mb and 10 Gb interfaces.

Application Availability, Scalability and Flexibility

- ACOS is designed to provide a scalable, flexible platform.
- Provides 99.999% reliability for applications.
- Scales server farm capacity with new-generation server load balancing.
- Flexibility to adapt to changing business requirements with aFlex scripting language.

ing language.

- Supports both Transparent Mode and Gateway Mode for flexibility in deployment.
- Supports Layer 2 Hot-Standby, Active-Active and Active-Standby.
- Delivers carrier-grade high availability (HA) for 100% uninterrupted service.

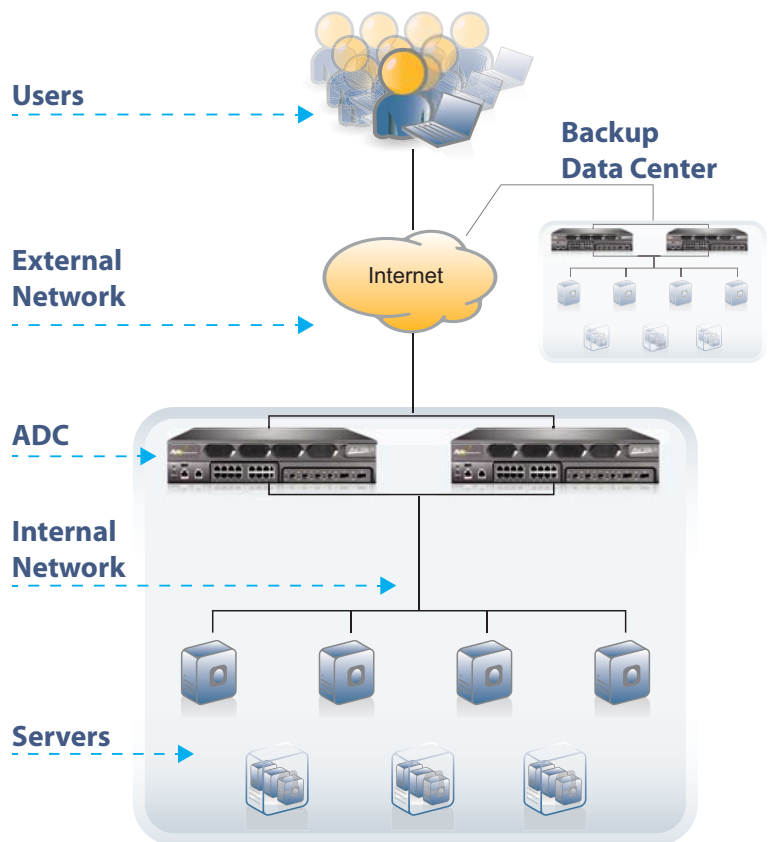
Integrated Application Security

- Protects application servers from Denial of Service and protocol anomaly attacks.
- Ensures application availability for legitimate traffic during malicious attacks.

Application Solution



Blackboard

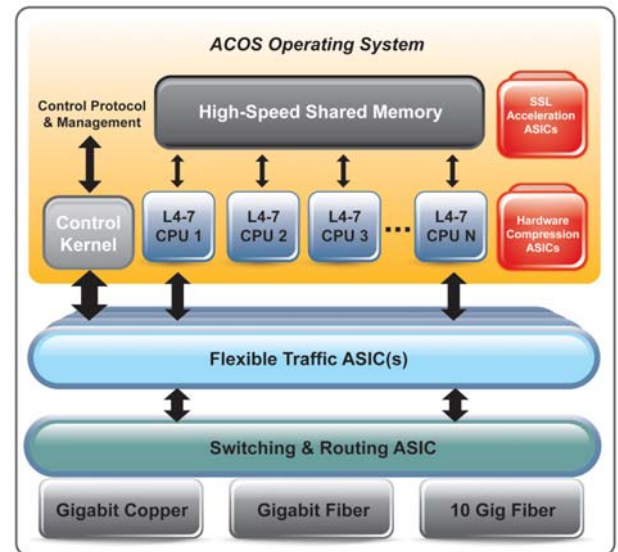


Application Delivery Landscape

Advanced Core Operating System (ACOS)

The AX Series integrates modern multi-core, multi-threaded OS technologies (ACOS) with A10's Flexible Traffic ASIC, switching/routing ASIC and SSL Acceleration ASIC to provide performance advantages. Leveraging Symmetric Multiprocessing (SMP) technologies used in super-computing, the AX uses a decoupled multi-CPU architecture with simultaneous high-speed memory access to process application traffic in true parallel fashion, without the need to copy data or replicate computing instructions.

ACOS, standard in all AX models, provides true linear scalability of Layer 4-7 application features – for acceleration, availability, and security. The AX Series includes secure email services, Global Server Load Balancing (GSLB), comprehensive firewall load balancing, video/voice acceleration, IPv4 and IPv6 traffic management, and SSL and non-SSL server load balancing.



Hardware Summary

The AX family includes a range of platforms that vary according to performance, price and hardware.



	AX 1000-11	AX 2200-11	AX 3200-11
Model Option Code			
Ethernet Interface			
Gigabit Copper	6	16	16
Gigabit Fiber – SFP Mini GBIC	2	4	4
10 Gigabit Fiber - XFP	0	0	2
Management Interface	Yes	Yes	Yes
Console Port	Yes	Yes	Yes
Solid-state Drive (SSD)	Yes	Yes	Yes
Cooling Fan	Fixed	Hot Swap Smart Fan	Hot Swap Smart Fan
Maximum Power Consumption	155 W	325 W	380 W
Power Supply	250 W	Dual 600 W RPS	Dual 600 W RPS
	100 to 240 VAC, Frequency 50 – 60 Hz		
Hardware Acceleration			
Linear Decoupled Architecture	Yes	Yes	Yes
Flexible Traffic ASIC	No	Yes	Yes
SSL Acceleration ASIC	Yes	Yes	Yes
Switching/Routing ASIC	No	Yes	Yes
Hardware Compression ASIC	No	Option	Option
Dimensions	1.75 in (H), 17.3 in (W), 16.7 in (D)	3.5 in (H), 17 in (W), 24 in (D)	3.5 in (H), 17 in (W), 24 in (D)
Rack Units (Mountable)	1 U	2 U	2 U
Unit Weight	15 lb	38 lb	38.5 lb
Operating Ranges	Temperature and Humidity 0° - 40° C 5% - 95%		
Regulatory Certification	FCC Class A, UL, CE, TUV, CB, VCCI		
Standard Warranty	90-day Hardware & Software		

Features

» Application Delivery Features

- Comprehensive IPv4/IPv6 Support
- Advanced Layer 4/Layer 7 Server Load Balancing
 - ♦ Fast HTTP, Full HTTP Proxy
 - ♦ High-performance, template-based Layer 7 switching with header/url/domain manipulation
 - ♦ Comprehensive Layer 7 application persistence support
- Comprehensive load balancing methods
 - ♦ Round Robin, Least Connections, Weighted RR, Weighted LC, Fastest Response
- aFleX – allows deep packet inspection and transformation for customizable, application-aware switching
- Advanced Health Monitoring
 - ♦ Comprehensive Protocol Support - ICMP, TCP, UDP, HTTP, HTTPS, FTP, RTSP, SMTP, POP3, SNMP, DNS, RADIUS, LDAP
 - ♦ TCL Scriptable Health Check support
 - ♦ High Availability – Active-Active, Active-Standby configurations with sub-second failover
 - ♦ SIP Load Balancing for VoIP and other rich-media applications
 - ♦ Secure Email Support – STARTTLS, POPS, LDAPS, SMTPS, IMAPS
- Spam Filter Support – allows high-speed application of very large black/white lists
- Firewall Load Balancing (FWLB)

- Global Server Load Balancing (GSLB)
- Transparent Cache Switching (TCS)
- Link Load Balancing

» Acceleration & Security Features

- HTTP Acceleration & Optimization
 - ♦ HTTP Connection Multiplexing
 - ♦ HTTP Caching
 - ♦ HTTP Compression (hardware based)
- SSL Acceleration
 - ♦ Hardware-based SSL Offload
 - ♦ Support for all TCP Protocols – SSL Termination, SSL Bridging (SSL Initiation)
- SSL Session ID Reuse
- Hardware-based SYN Cookies, IP Anomaly Detection
- Connection Rate Limiting/Connection Limiting
- DNS Application Firewall

» High Performance, Scalable Platform

- ACOS Operating System
 - ♦ Multi-core, Multi-CPU Support
 - ♦ Linear Application Scaling
 - ♦ Linux on Control Plane
- ACOS on Data Plane

» Networking

- Integrated Layer 2/Layer 3
- Transparent Mode/Gateway Mode
- Routing – Static Routes, IS-IS (v4/v6), RIPv2/ng, OSPF v2/v3, BGP4+
- VLAN

- Trunking
- Access Control Lists (ACLs)
- Traditional IPv4->IPv4 NAT/NAPT
- IPv6->IPv6 NAPT

» IPv6

- Full native IPv6 management and feature support
- SLB-PT (Protocol Translation), SLB-64 (IPv4<->IPv6, IPv6<->IPv4)

» Management

- Dedicated Management Interface (Console, SSH, Telnet, HTTPS)
- Web-based Graphical User Interface (GUI) with Language Localization
- Industry-standard Command Line Interface Support
- SNMP, Syslog, Alerting
- Port Mirroring
- Virtualization
 - ♦ Role Based Administration (RBA)
 - ♦ Partition Based Management
- REST-style XML API (aXAPI)

» Carrier-grade Hardware

- Hot Swappable Redundant Power Supplies
- Removable Fan Tray
- Solid-state drive (SSD), Compact Flash
- Advanced Hardware Architecture
- High Port Density
- 10 Gb Ports

Performance by Design

To learn more about the AX Series Advanced Traffic Manager and how to improve application performance up to 8 times faster while enhancing reliability and security, visit A10 Networks' website at: www.a10networks.com or call and talk to an A10 sales representative.

About A10 Networks

A10 Networks was founded in 2004 with a mission to provide innovative networking and security solutions. A10 Networks makes high-performance products that help organizations accelerate, optimize and secure their applications. A10 Networks is headquartered in Silicon Valley with offices in the United States and centers of excellence around the globe. For more information, visit www.a10networks.com.

Corporate Headquarters

A10 Networks, Inc.
2309 Bering Drive
San Jose, CA 95131
Tel: +1 408 325-8668
Fax: +1 408 325-8666

North America Sales:

+1 888 A10-6363
+1 408 325-8616
sales@a10networks.com

World Wide Offices:

Asia Pacific (Main)

apac_sales@a10networks.com

China

china_sales@a10networks.com

Hong Kong

hongkong@a10networks.com

Japan

jinfo@a10networks.com

Korea

korea@a10networks.com

Malaysia

southasia@a10networks.com

Singapore

southasia@a10networks.com

Taiwan

taiwan@a10networks.com

Europe (Main)

emea_sales@a10networks.com

France

france@a10networks.com

Germany

emea_sales@a10networks.com

The Netherlands

emea_sales@a10networks.com

Latin America (Main)

latam_sales@a10networks.com

Brazil:

brazil@a10networks.com

